



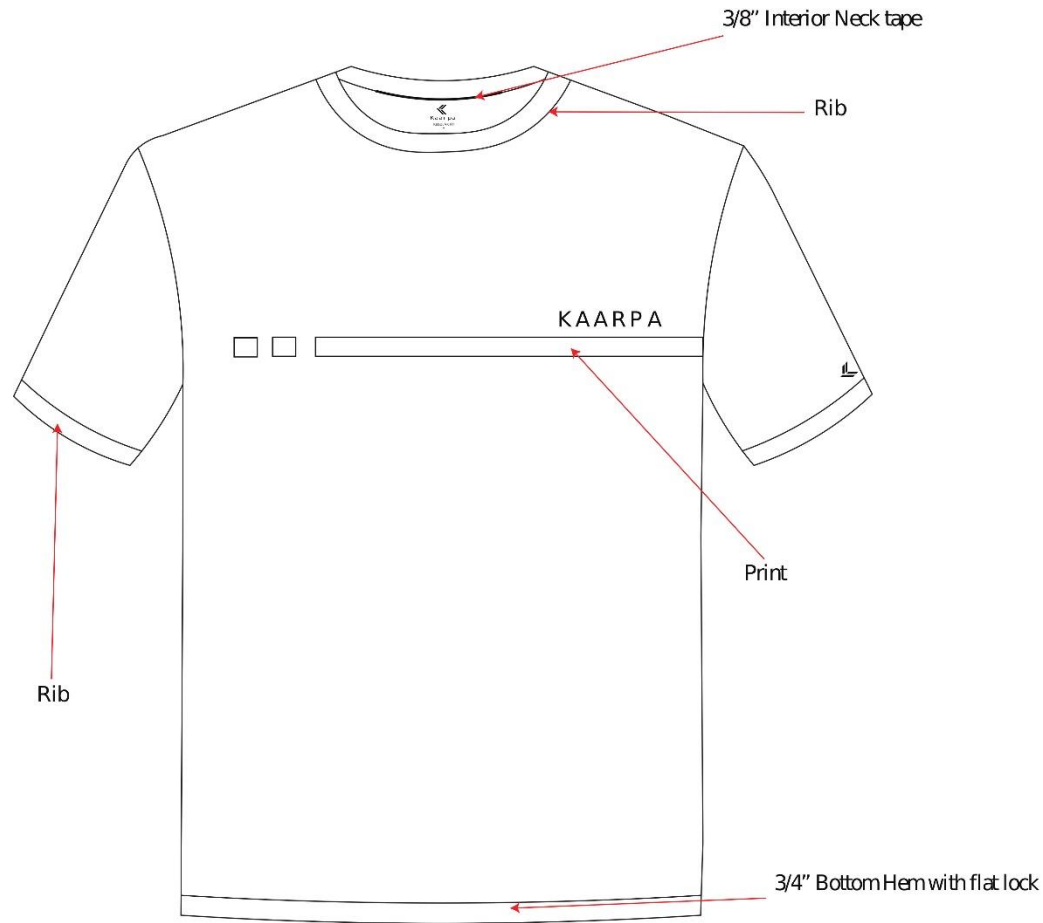
<b>Product: Men's Round Neck Sports T-shirt</b>	<b>Style Description: 100% Cotton Men's Printed T-shirt</b>
<b>Style:</b>	<b>Created date: 17 April 2024</b>
<b>Brand: Kaarpa</b>	<b>Designer:</b>
<b>Season:</b>	<b>Production date:</b>
<b>Color: White</b>	<b>Ex- shipment date:</b>
<b>Quantity: 150</b>	<b>Shipment date:</b>
<b>Fit: Regular</b>	<b>Vendor:</b>
<b>Number of labels: 03</b>	<b>Sample size: M</b>



This document and its contents are confidential and proprietary to **KAARPA**. Unauthorized use or reproduction is strictly prohibited. Protected under international copyright laws. For internal use only

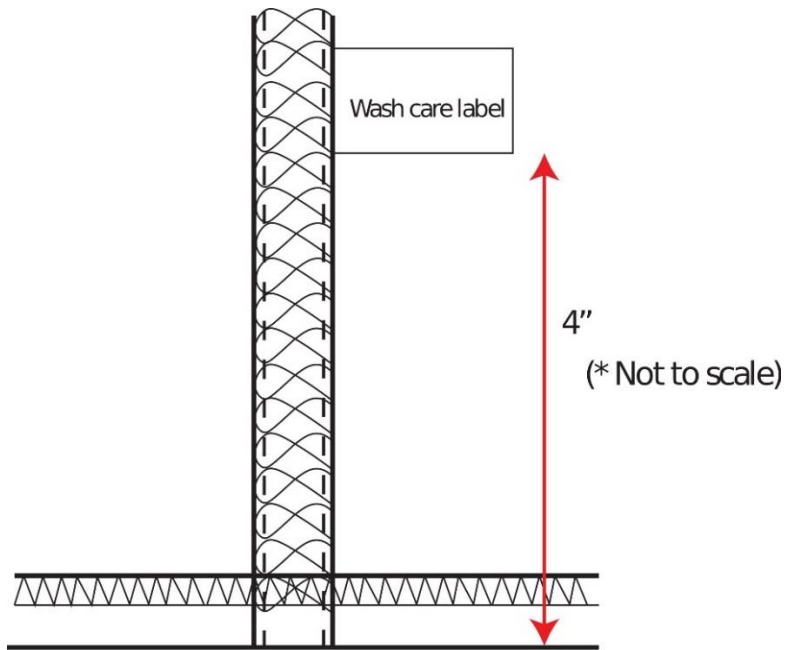


Technical Sketch



Kaarpa written in Dodger Condensed/ Dodger Condensed Italic

(Print color code- 040083)



Wash Care Label attach to wearer's left side seam

Printed Main Label with fit and Size (Heat Transfer Label )





Measurement Chart (in inches)

Sl no.	Name	Tol +	Tol -	XS	S	M	L	XL	XXL
01	Neck Width seam to seam	1/4	-1/4	6 1/2	6 3/4	7	7 1/4	7 1/2	7 3/4
02	Front Neck Drop	1/8	-1/8	3 7/8	4	4 1/8	4 1/4	4 3/8	4 1/2
03	Back Neck Drop	1/8	-1/8	7/8	7/8	7/8	7/8	7/8	7/8
04	Shoulder Slope	1/8	-1/8	2 1/4	2 1/4	2 1/4	2 1/4	2 1/4	2 1/4
05	Across Shoulder	3/8	-3/8	16	17	18	19	20	21
06	Across Front (7") from HPS	3/8	-3/8	13 3/4	14 3/4	15 3/4	16 3/4	17 3/4	18 3/4
07	Across Back Width (7") from HPS	3/8	-3/8	14	15	16	17	18	19
08	Chest	1/2	-1/2	17 1/2	18 3/4	20	21 1/4	22 1/2	23 3/4
09	Waist – 17" down from HPS	1/2	-1/2	17	18 1/4	19 1/2	20 3/4	22	23 1/4
10	Bottom	1/2	-1/2	17	18 1/4	19 1/2	20 3/4	22	23 1/4
11	Front Length from HPS	1/2	-1/2	26	27	28	29	30	31
12	Armhole ½ Straight	3/8	-3/8	8 1/4	8 5/8	9	9 3/8	9 3/4	10 1/8
13	Center Back Sleeve Length	1/4	-1/4	15 1/2	16 3/8	17 1/4	18 1/8	19	19 7/8
14	Sleeve Opening	1/4	-1/4	5 3/4	6	6 1/4	6 5/8	7	7 3/8
15	Forward Shoulder	1/4	-1/4	1/2	1/2	1/2	1/2	1/2	1/2
16	Minimum Neck Stretch	1/4	-1/4	23	23	23	23	23	23
17	Sleeve CAP Height	1/8	-1/8	5 1/2	5 5/8	5 3/4	5 7/8	6 1/8	6 3/8
18	Underarm Sleeve Length	1/8	-1/8	2 3/4	2 7/8	3	3 1/8	3 1/4	3 3/8

This document and its contents are confidential and proprietary to **KAARPA**. Unauthorized use or reproduction is strictly prohibited. Protected under international copyright laws. For internal use only

Created by- Tech pack Genius

**Size Distribution**

<b>Size</b>	<b>Quantity</b>
<b>XS</b>	<b>10</b>
<b>S</b>	<b>10</b>
<b>M</b>	<b>40</b>
<b>L</b>	<b>40</b>
<b>XL</b>	<b>40</b>
<b>XXL</b>	<b>10</b>
<b>Total</b>	<b>150 (One hundred and fifty only)</b>



### Bill of materials

Serial no.	Material Description	Supplier	Quantity	Placement
01	Main Fabric- (With color & GSM – 100% cotton)	Approved Vendors Only		Main Body
02	Tape	Approved Vendors Only		DTM Body/ at neck
03	Transparent tape	Approved Vendors Only		At Shoulder Seam
04	Rib (color code- 040083)	Approved Vendors Only		At Neck and Sleeve
05	Main Label	Approved Vendors Only		At Neck
06	Size Label	Approved Vendors Only		At Neck
07	Wash Care Label with made in India label	Approved Vendors Only		Side Seam
08	Thread – Coats/ Gutterman	Approved Vendors Only		DTM to Body
09	KAARPA Hangtag	Approved Vendors Only		
1/10	Price Tag	Approved Vendors Only		

This document and its contents are confidential and proprietary to **KAARPA**. Unauthorized use or reproduction is strictly prohibited. Protected under international copyright laws. For internal use only

Created by- Tech pack Genius



<b>11</b>	Polybag			
<b>12</b>				
<b>13</b>				
<b>14</b>				



Swatch Card

Paste/Staple  
MainFabric Swatch  
in the box

**Main Fabric Content:** 100% Cotton

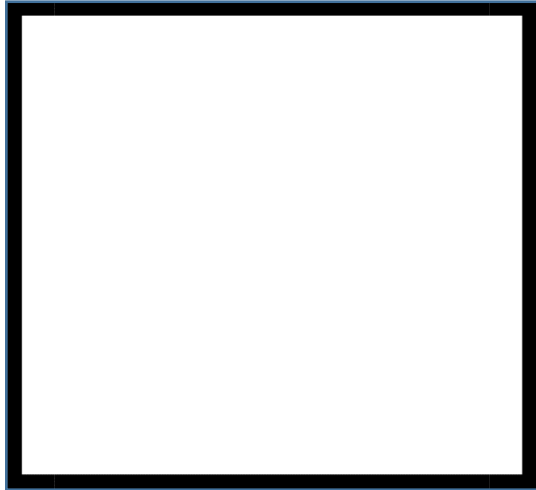
This document and its contents are confidential and proprietary to **KAARPA**. Unauthorized use or reproduction is strictly prohibited. Protected under international copyright laws. For internal use only

Created by- Tech pack Genius





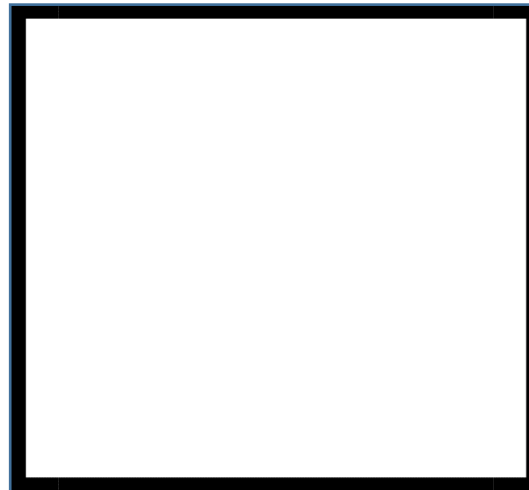
**Trims Chart**



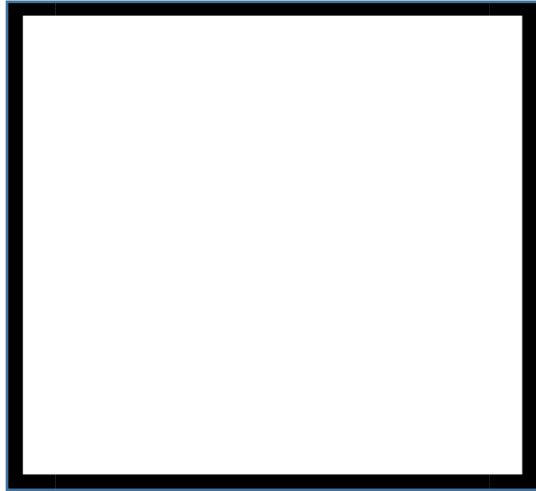
**Rib**



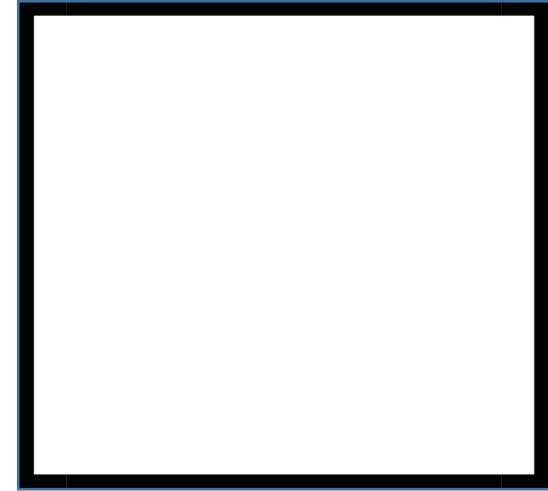
**Transparent Tape**



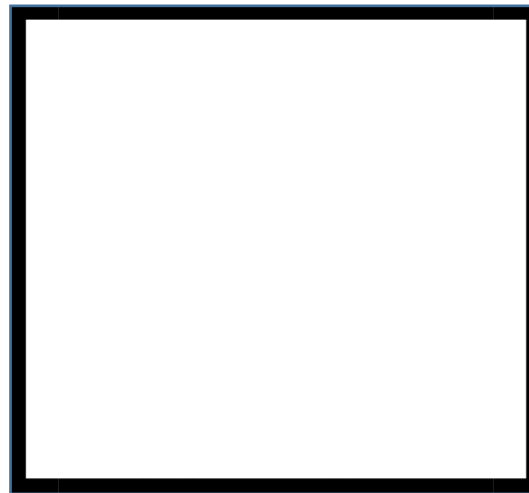
**Main Label & Size Label**



**Wash care Label**



**Kaarpa Hangtag**



**Price Tag**

**Label placement**

<b>Number of label: 03</b>
<b>Type of label: Heat Transfer Label Main Label with fit and size/ Taffeta Wash Care Label</b>
<b>Main label Placement: On neck</b>
<b>Size label placement: On neck</b>
<b>Wash care label placement: 4'' above from bottom hem on Side Seam (on wearer's left side)</b>
<b>Other details:</b>

**Washing**

<b>Washing: Wash with like colors</b>
<b>Bleach: Only non-chlorine bleach when needed</b>
<b>Dry: Line Dry</b>
<b>Iron: High Iron</b>
<b>Dry clean:</b>



**Comment**
